



# Snow Country Snippets

## February 2013

Club News Sheet Editor - Meg Brannon  
Please send items to [megbrannon@bigpond.com](mailto:megbrannon@bigpond.com)

Dear Member and Friends

The Snow Country Ski Club had a very successful end to 2012 and a terrific start to 2013!

In 2012 we had a great snow season accompanied by increased lodge attendance and exposure. This was reflected in a joyous end of year social gathering where over 100 people were in attendance. The highlight for some was definitely a toss up between the Gangnam style dancing and Santa losing his pants! (more photos on the last page)



At the end of 2012 the Board reflected on the hard work that has been done by many volunteers to ensure the ongoing success of the Club. It is always a difficult decision to choose Club Member of the Year as there are many worthy candidates. In particular, one member's contribution to the club stood out and I have great pleasure in announcing that Lucille Back has been elected the 2012 Club Member of the Year.

The Board also acknowledged the contributions of many other volunteers over many years and we have elected the following members to the position of Honorary Members for significant service in their stated roles;

- **Gillian Adrian** – Jindabyne Booking Officer, Treasurer and Director
- **Frank Back** – Club Solicitor
- **Lesley Matthews** – Smiggin Holes Booking Officer
- **Andrew Waugh** – Director and Building works at Jindabyne

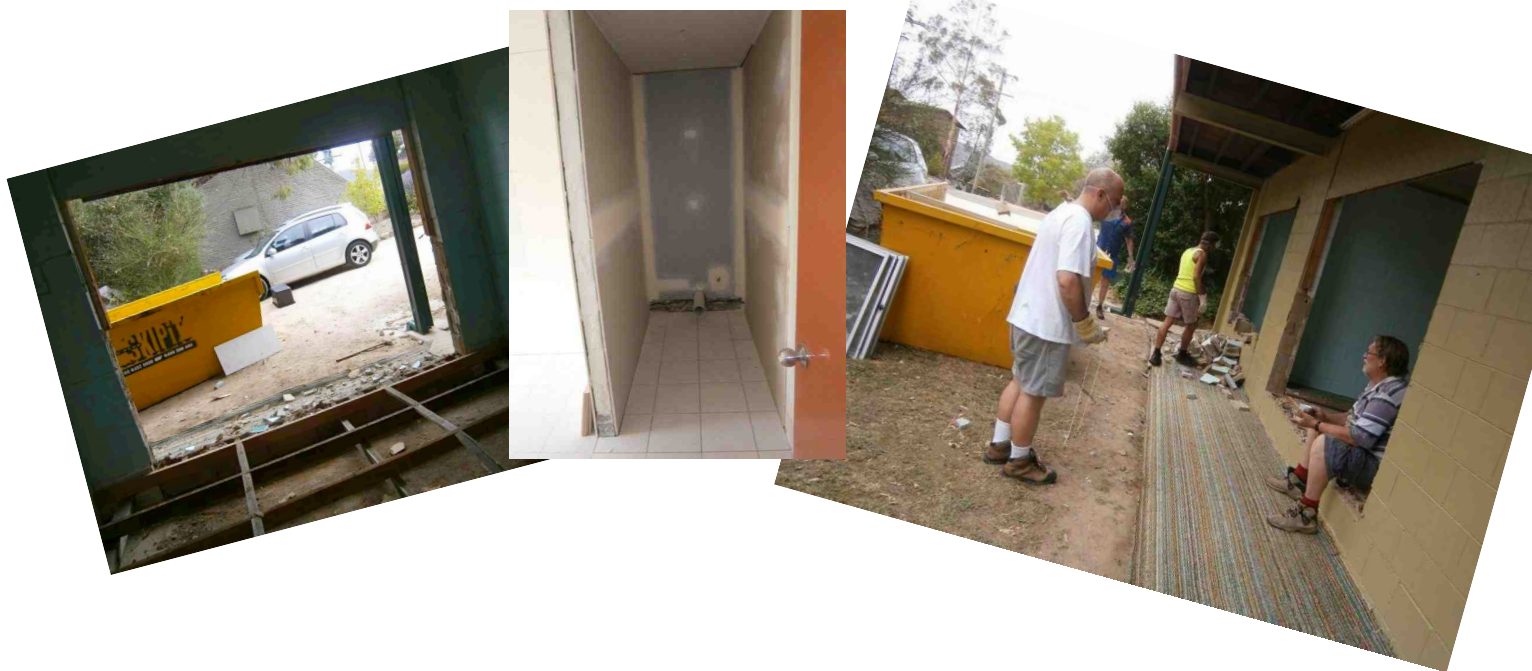


I would like to congratulate each of these members for their tremendous contribution to the club over many years.

The beginning of 2013 has been a busy time for the board. In particular, we have considered the following issues:

1) The operational costs of lodges have increased over the last 12 months. In particular, energy and insurance costs have seen significant rises. As a consequence the board has found it necessary to slightly increase accommodation rates for the coming Winter 2013. (please refer to the club website and booking forms for the adjusted prices)

2) At the JINDABYNE LAKE LODGE, the floorboards of Units 9A and 9B (downstairs dormitory units) have been gradually deteriorating with time. These floorboards were at the point that patch up jobs were no longer sufficient. The board therefore decided that the time had come to fix the problem and with the assistance of Andrew Waugh on site in Jindabyne and Director Laurie Ward and his wife Jill, tradesmen have been coordinated to commence the renovations of these units. On removal of the floorboards many hidden surprises were discovered including the presence of a significant amount of asbestos, broken pipes and a small infestation of white ants in the supporting beams. Despite these many obstacles, we are now well on the way to refurbishing these units so they are no longer rough dormitories, but very presentable (and similar configured) self-contained units, like Units 1 through 8 on the top level. Each Unit will have its own private bathroom and kitchenette, and they will be known as Units 9 and 10. The entranceway to each will be through lockable sliding doors from the lower grassed area and there will also be a lockable door between the two units, such that a larger family group will be able to book and use the two units with a fully interconnecting access door. (These two units will no longer be available as dormitory 'book a bed' type units.) Special thanks go to Andrew, Jonathon and Sebastian Marsden for their efforts in assisting with various aspects of the onsite work.





3) At the SMIGGINS LODGE, we have organised with our local Snowy Mountains Electrician to completely remove and replace the 50 year old asbestos backed Power Switch board of the lodge. The new board is now installed with the latest mod con meters / circuit breakers etc and should give a stable electric supply service (barring general power failures) to the building for the foreseeable future.

4) We also have another project underway for the probable refurbishment of the Ski Lodge bathrooms and foyer area. Special thanks go to Geoff and Pam Pring and Rod and Toni McMillan for their recent on-site involvement with David E and Robyn Carr, meeting with tradesmen etc to determine the possibilities of this project being able to be undertaken and completed prior to the commencement of the upcoming winter season.

5) At the end of 2012, Della Whitton stepped down from her position as financial controller of the club. We are seeking a suitable replacement for the financial controller position. If you have bookkeeping/accounting experience, including the use of MYOB, and have a few hours free each week to volunteer please contact Gavin Boyd 0431 496 721 or [info@snowcountry.com.au](mailto:info@snowcountry.com.au)

5) Also, I would like to welcome and thank Meg Brannon for taking on the role of Newsletter editor. Please feel free to forward any content for the newsletter to [megbrannon@bigpond.com](mailto:megbrannon@bigpond.com)

***Gavin Boyd - President***

## **Key Dates 2013**

15 <sup>th</sup> March	Applications for Junior Race Training Program Close
2 <sup>nd</sup> April	Smiggins Lodge “Members” bookings open (Sally is away most of March)
16 <sup>th</sup> April	Smiggins Lodge “Non Members” bookings open
25 <sup>th</sup> May	Annual General Meeting at St George Leagues Club, Kogarah
7 <sup>th</sup> June	Winter season opens
7 <sup>th</sup> - 10 <sup>th</sup> July	Junior Race Training program
10 <sup>th</sup> August	Senior Interclub Races
14 <sup>th</sup> - 15 <sup>th</sup> September	Smiggins Bowl (free accommodation, both Lodges for “helpers and participants” for this event)
7 <sup>th</sup> October	Winter season closes



## **Junior Development Program**

Snow Country Ski Club sponsors a Snow Sports Race Training Program for its Junior Members and children of Members under the age of 18 years. This program is conducted over 4-5 days during the July school holidays and although there is no minimum age requirement, children need to be skiing at Level 4 or higher before they can participate in this program.

Over the many years that the JDP has operated, the children who have been involved in this program have not only improved their skiing/snowboarding abilities but have also made lasting friendships within the club.

The 2013 Junior Training Program will be held from July 7<sup>th</sup> to July 10<sup>th</sup>.

Application forms for this program are available on our website and the submit date for the close of applications is 15<sup>th</sup> March, 2013. If any Member is interested in finding out more about this program for their children, please visit the Snow Country website (JDP information can be found at the end of the News Page) or send an email to [info@snowcountry.com.au](mailto:info@snowcountry.com.au).

## **Work Parties**

With all the work going on and planned in both lodges, volunteer club member and assistance from friends is considered likely and will be very much appreciated.

We plan to send out emails to all members (a few weeks in advance) of each time a work party is decided upon, for tasks such as internal painting and patch up, moving of furniture, general clean up etc etc. Volunteers of all strengths and dispositions will be appreciated.

Please contact David E. Carr on (02) 9816 2590 whenever you are able to help.

Snow Country Ski Club Co-operative Ltd

[www.snowcountry.com.au](http://www.snowcountry.com.au)

[info@snowcountry.com.au](mailto:info@snowcountry.com.au)

PO Box 664 West Ryde NSW 1685



## Prize Winners from the Pre Christmas function



Michael Brannon was the lucky winner of the Holiday raffle.



Adam Moate won a great set of Parabolic Skis.

## Member Birthday News



- Noreen Walsh, nearly a life-time member, celebrated her 90<sup>th</sup> Birthday on 2<sup>nd</sup> December.
- Arthur Parry will celebrate his 95<sup>th</sup> birthday on 26<sup>th</sup> March this year, and his wife Thelma celebrated her 92<sup>nd</sup> birthday on 1<sup>st</sup> Oct last.

*“ Arthur’s vision is now not so good, but he says he enjoys listening to Talking Books he receives from the blind society.”*

Their son Peter Parry and his family have moved to Orbost in Victoria to live, and are now only 2hrs from Jindabyne / Smiggins, so we possibly may see them on some work parties this year.



## Condolences

- Condolences to Pam Pring on the passing of her son Darrell, who passed away suddenly on 5<sup>th</sup> December, 2012.
- Condolences to family and friends of Nina Shumack passed away 16<sup>th</sup> May 2012. (apologies for the lateness of this condolence)

## **Get Well Wishes**

Long time member and past Director & Officer Robyne Waller has had a tough year in 2012. Robyne had a bad fall during 2012 and after much pain and suffering, was eventually diagnosed with a fracture in the lumbar region of her spine. She is now slowly recuperating after some medical intervention and we are sure she would love to hear from any Ski Club friends. She is now living at "Woollooware Shores Anglican retirement Village and her contact number is 95258866. Speedy recovery Robyne.

## **Upcoming Baby News**

We also send Robyne Waller's son Richard, and his wife Clare, our very best wishes on the lovely news that they are expecting another baby in August - a brother or sister for Isabella and Cooper.

## **Thankyou**

Toni McMillan (Club member from Wollongong) has offered her services as "Social Organiser - Wollongong Region." We thank Toni for her help and wonder whether there is someone who could take on a similar role in the Sydney region? The job should not take too much time. At present we only have the Pre-Christmas Luncheon to organise, but it would be great if some other functions such as Theatre nights, picnics etc could be organised so more club members can meet each other out of the Lodge environment.

Please contact David E. Carr on (02) 9816 2590 if you are able to assist with this role.

## **History Timeline**



The Board is desirous of creating a history timeline showing the names of the various managers who have managed our lodges. If any member knows the names on any of our past managers and the dates they managed one of our clubs, could we ask that they email the details to our secretary Helen Brown - [helen7brown@hotmail.com](mailto:helen7brown@hotmail.com)

## **Annual Subs**

Please pay Annual Subs promptly as this helps the club with its finances. You must also be a financial member in order to participate and vote on any matters at the AGM.

**Important Websites** - keep an eye on these websites for information and great deals.

<http://www.snowcountry.com.au/>

<http://www.perisher.com.au/>

<http://www.thredbo.com.au/>



Snow Country Ski Club Co-operative Ltd

[www.snowcountry.com.au](http://www.snowcountry.com.au)

[info@snowcountry.com.au](mailto:info@snowcountry.com.au)

PO Box 664 West Ryde NSW 1685





Snow Country Ski Club Co-operative Ltd  
[www.snowcountry.com.au](http://www.snowcountry.com.au)  
[info@snowcountry.com.au](mailto:info@snowcountry.com.au)  
 PO Box 664 West Ryde NSW 1685